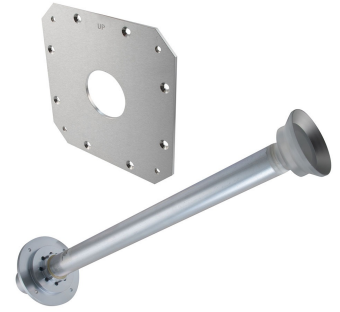


Retrofit Kit for 6' (1.8M) Parabolic, Upgrade Existing Direct Mount to Remec Rectangular, 5.725 to 7.125 GHz



RFK-OEM-RR-6-6

The Parabolic Reflector Retrofit Kits by RadioWaves allow previously deployed Antennas to be upgraded to the latest radios on the market. These kits come with new feed horns, interface, and mounting hardware needed for rapid installation, under budget!

The RFK-OEM-RR-6-6 will allow you to directly interface an existing direct mount HP6 parabolic antenna to a Remec series radio. This kit is designed for 6 ft | 1.8 m reflectors to be coupled with radios operating from 5.725 GHz to 7.125 GHz Frequency range with Single Polarization Rectangular waveguide interface. If it's rugged, it must be RadioWaves!

General Specifications

Antenna Type	Parabolic Reflector Retrofit Kit
Size, nominal	6 ft 1.8 m
Waveguide	Rectangular

Radio Manufacturer	Remec
Polarization	Single

Electrical Specifications

Operating Frequency Band	5.725 GHz to 7.125 GHz
--------------------------	------------------------

TECHNICAL DRAWINGS

